

THE PLAYER SERIES

Introducing The Player Series
from Black Walnut Manor:

an up close and personal experience with four
key Players in the Twenty Valley's wine industry

DAY ONE:

Welcome cocktail & introduction to your Player.

An intimate 4 course winemaker's dinner featuring the cuisine of Chef Rob Berry of The Blue Turtle. Your dinner will represent the best of regional ingredients and each course will be complemented by wines selected from your Player's cellars.

DAY TWO:

The day starts with a signature Black Walnut Manor breakfast.

A visit to your Player's winery for a VIP tour and premium tasting.

Grab a light lunch, explore the Twenty Valley or come back to the Manor for a little R&R.

For dinner, a delicious 3-course meal at your choice of: Vineland Estates, Treadwell Farm to Table, or On the Twenty.

Transportation to and from your dinner is included.

DAY THREE:

Your Player weekend wraps up with another signature Black Walnut Manor breakfast.

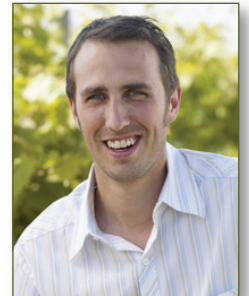
Limited to six guests, these intimate evenings with winery principals will give you a glimpse behind the cellar doors at one of four featured wineries: Flat Rock Cellars, Henry of Pelham, Featherstone Estate Winery and Vineland Estates.

Treat your partner or bring a small group to this truly memorable wine & culinary weekend package. Your adventure includes 2 nights deluxe accommodation at chic Black Walnut Manor, an intimate 4-course dinner with the Player of your choice, a VIP tour and tasting at the Player's winery, and on your second evening, dinner at one of three distinctive Twenty Valley winery restaurants.



March 27-28, 2009

Ed Madronich
Flat Rock Cellars



April 3-4, 2009

Daniel Speck
Henry of Pelham



April 17-18, 2009

David Johnson & Louise Engel
Featherstone Estate Winery



April 24-25, 2008

Brian Schmidt
Vineland Estates

For more information or to book a PLAYER weekend
call or email Carole Tothe-Gurgol

905 562-8675 • 1 800 859-4786

blackwalnutmanor@sympatico.ca • www.blackwalnutmanor.com

It is a very special weekend at a very special price- starting at \$499-per person based on double occupancy. If you would like to upgrade to the retreat* suite the rate is \$545-pp.

Brought to you by:

